

Goal of Facilities Business Continuity

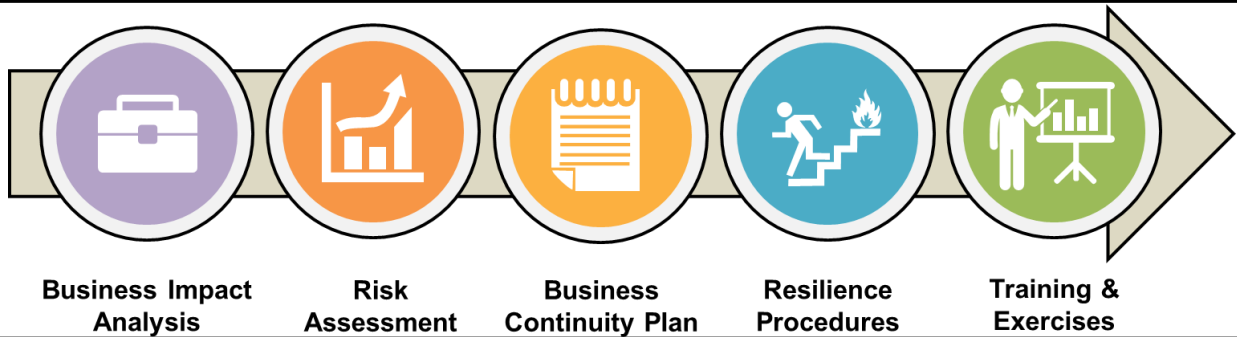


Facility Managers should take a lead role!

Corporate planning focuses on continuing operations and making money. Facilities focuses on enabling people to do that.



1. FM's mission is to protect employees and assets
2. FMs have a very particular set of skills
3. FMs focus on enabling people to work



Business Impact Analysis

Based on the results of the BIA, FEA organized the essential functions to allow YMUS to see the essential functions on a time scale.

<u>Vital Services</u>	
<u>Critical Services</u>	<u>HR</u>
<u>HR</u>	Payroll
Communication	<u>Facilities</u>
Emergency Response	IEQ (Opening Facilities)
Cowork Management	Repairs and Maintenance
<u>Facilities</u>	Customer Service
Physical Security	
Emergency Response	

RTO:

24 Hours

48 Hours

Communications

- The YMUS Corporate Crisis Communication Plan will be utilized to communicate all YMUS incidents to appropriate stakeholders.
- The role of the Crisis Communication Committee (CCC) is to provide the lead communicator with available information and counsel pertaining to the incident in order to ensure communication is accurate and effective.

Muscle Memory

Education

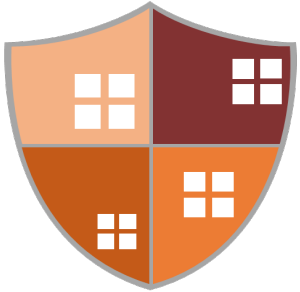
Teach and educate your employees on your procedures, plans, and policies.



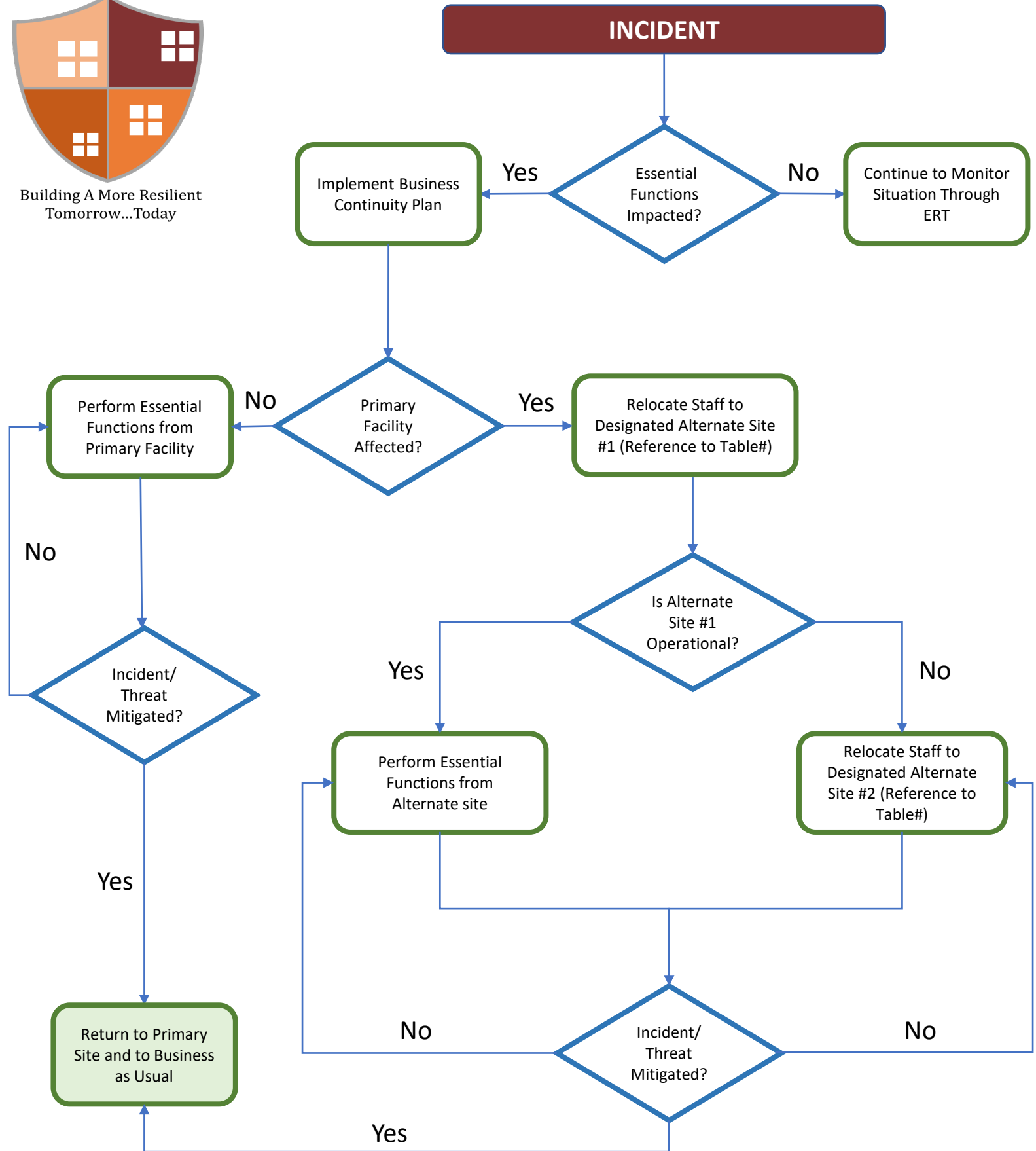
Exercises & Drills

Practice your procedures
Practice them again
Practice them again

Business Continuity Response Actions



Building A More Resilient Tomorrow...Today



Need More? Contact:

Maureen Roskoski, Facility Engineering Associates Maureen.Roskoski@feapc.com
 Bill Conley, Yamaha Motor Corporation Bill_Conley@yamaha-motor.com